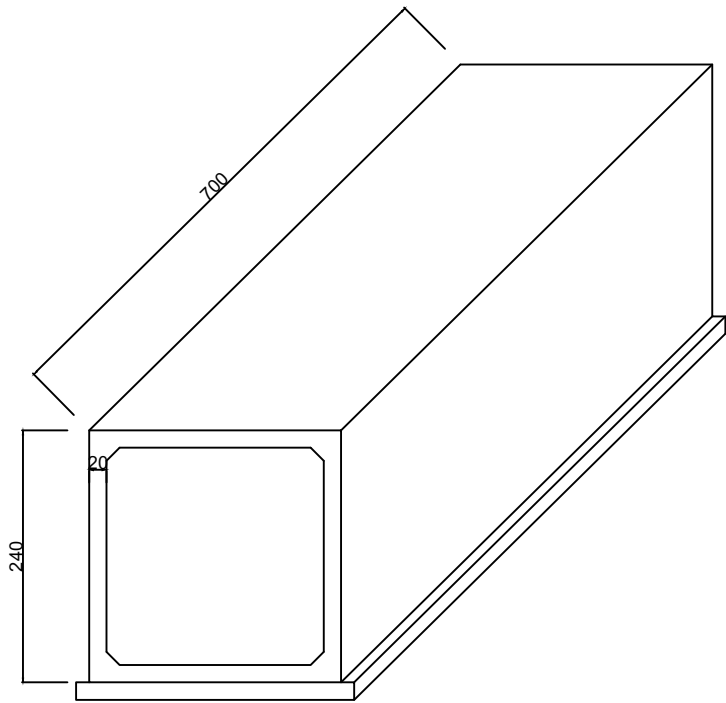
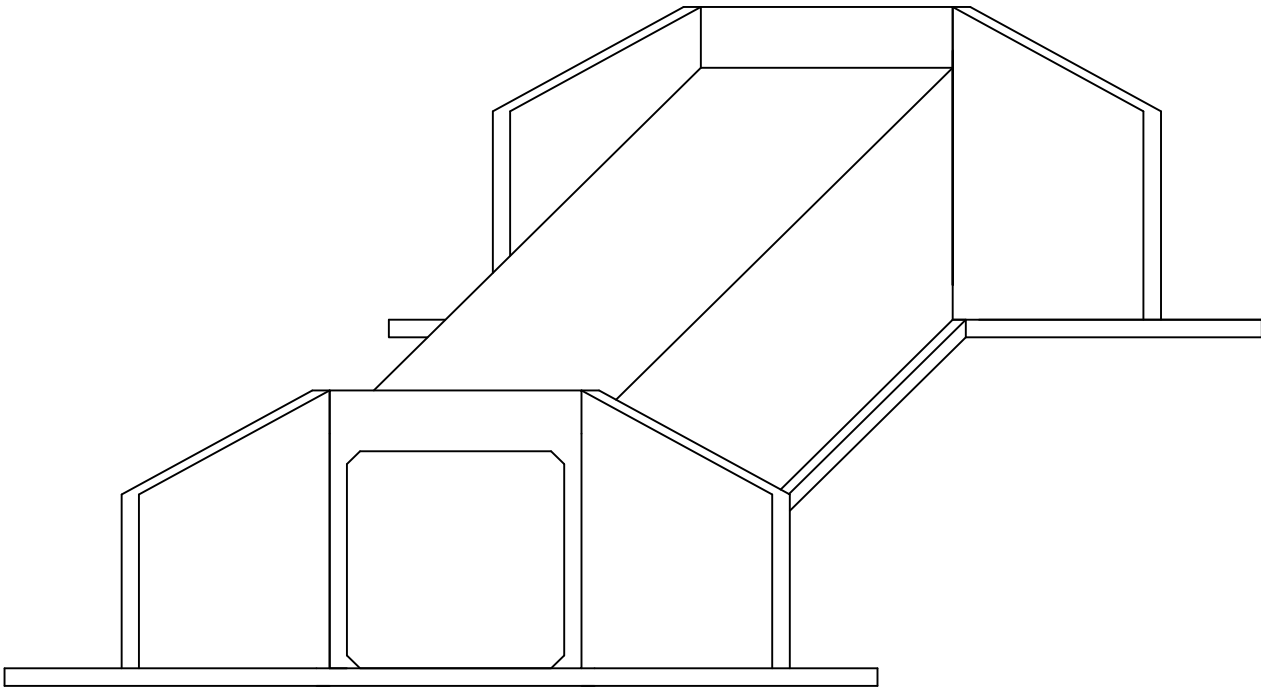


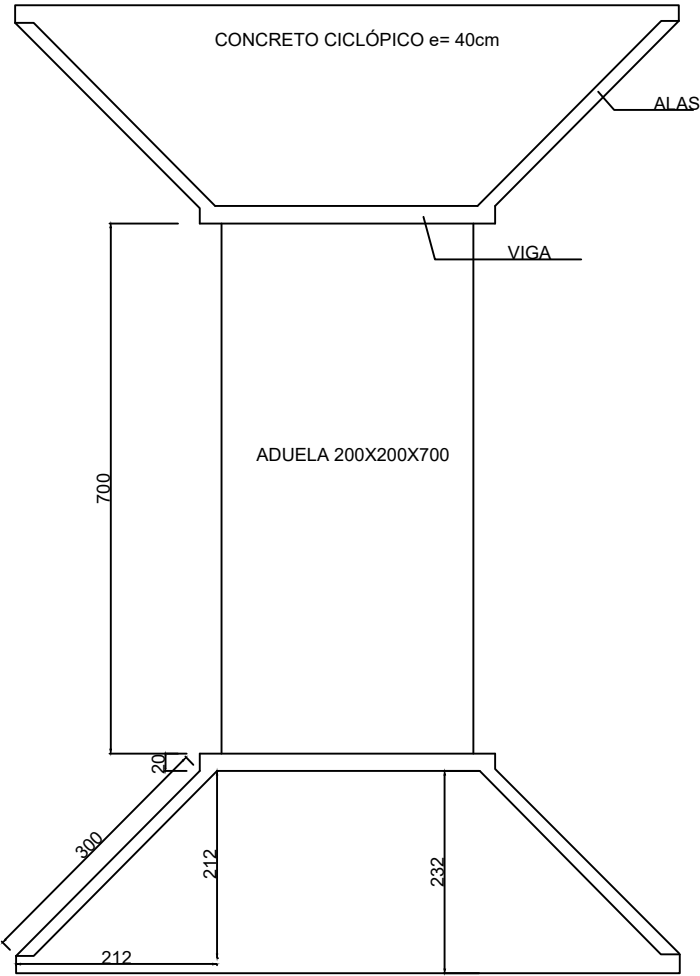
DETALHE  
ADUELA



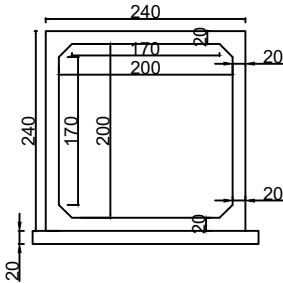
DETALHE



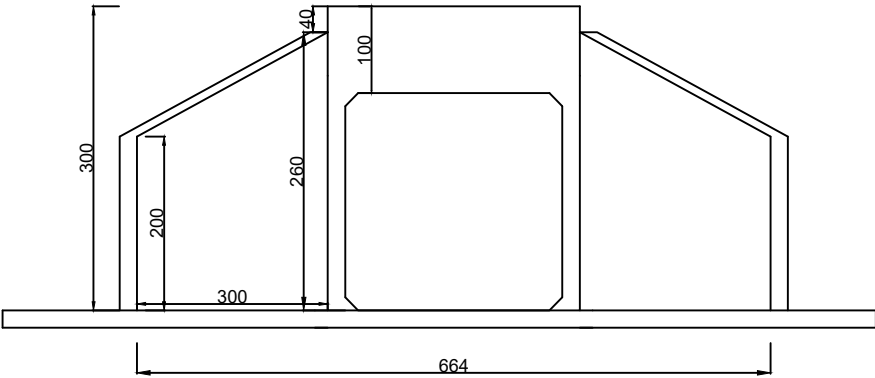
PLANTA



DETALHE  
ADUELA



DETALHE  
"CABECEIRA"



PREFEITURA DE CHAPADA DOS GUIMARÃES		
SECRETARIA MUNICIPAL DE INFRAESTRUTURA		
ASSUNTO: BUEIRO SIMPLES CELULAR DE CONCRETO 200X200 cm		
OBRA: SUBSTITUIÇÃO DE PONTE POR ADUELAS		
LOCAL: CÓRREGO RESSACADO		
AUTOR DO PROJETO: _____		
ENG. DAYNA APARECIDA DA SILVA - CREA - MT 49.331		
COORDENADAS: 15° 5'39.17"S 55°44'22.72"W	DATA: AGOSTO/2021	
DIMENSÕES: 200X200X700 cm	ESCALA: S/E	
DESCRIÇÃO: LAYOUT	VISTO:	FOLHA: 03/04